

STEINER 
Nothing Escapes You

eOptics

EOPTICS SERIES

**SUPERIOR
PERFORMANCE.
NO MATTER
THE SITUATION.**

STEINER EOPTICS PRODUCTS UTILIZE INNOVATIVE STATE-OF-THE-ART TECHNOLOGIES THAT MAKE YOU MORE EFFECTIVE IN THE FIELD AND PROVIDE A HIGHER LEVEL OF PERFORMANCE EVEN IN THE HARSHTEST OF ENVIRONMENTS. SO YOU CAN LET YOUR INSTINCTS AND TRAINING TAKE OVER AND STILL BE CONFIDENT, ACCURATE AND HIGHLY EFFECTIVE.

IMAGING SYSTEMS •
LASER AIMING SOLUTIONS •
BEACONS • ILLUMINATION

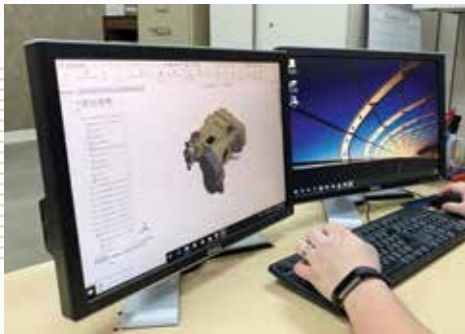




+1.937.426.2341

STATE-OF-THE-ART ENGINEERING DEPARTMENT

STEINER EOPTICS MAINTAINS A STATE-OF-THE-ART ENGINEERING DEPARTMENT WITH A FULL COMPLEMENT OF EXPERIENCED MECHANICAL, ELECTRICAL AND OPTICAL ENGINEERS. THESE SKILLED PROFESSIONALS ARE SUPPORTED BY HIGHLY SKILLED ELECTRICAL AND MECHANICAL TECHNICIANS.



RAPID PROTOTYPING

ONCE THE INITIAL DESIGN PROCESS IS FINISHED, 3-D PRINTING STATIONS ARE USED TO RAPIDLY PROTOTYPE AND PERFECT THE DESIGN. WE HAVE ACCESS TO SUPPLIERS AND RESOURCES TO QUICKLY TAKE A DESIGN PROJECT FROM BARE CONCEPT TO A WORKING, TESTABLE PROTOTYPE.

ASSEMBLY

ONCE PARTS AND ASSEMBLIES ARE RECEIVED, THE DESIGN TEAM IS ABLE TO ASSEMBLE AND TEST LASER AND ILLUMINATION SYSTEMS IN A STATE-OF-THE-ART EOPTICS LAB.

KEY TEST AND ASSEMBLY CAPABILITIES

- A HIGH LEVEL CLEAN ROOM FOR THE ASSEMBLY OF SENSITIVE EOPTICS PRODUCTS
- SENSITIVE OPTICAL POWER METERS AND BEAM CHARACTERIZATION CAMERAS WITH THE NECESSARY FILTERS AND APERTURES FOR MEASURING ALL LASER OUTPUTS FROM 500 NANOMETERS TO 1.5 MICRONS AT OUTPUT POWERS FROM .01 MILLIWATTS TO 500 MILLIJOULES
- LASER SAFETY ROOM WITH CONTROLLED ACCESS AND SAFETY SHIELDING
- A FULL ARRAY OF ENVIRONMENTAL TEST EQUIPMENT



PRODUCTION PROCESS

THE PRODUCTION PROCESS ENSURES THAT ANY DEFECTS IN THE ASSEMBLY PROCESS ARE CAUGHT AS EARLY AS POSSIBLE. THE MAJORITY OF THE ASSEMBLY STAGES ALSO HAVE A MATCHING TEST STAGE USED TO CONFIRM THAT THE PRIOR PRODUCTION STEP WAS PROPERLY PERFORMED.

MECHANICAL SHOCK, TO SIMULATE THE WEAPONS ON WHICH THE DEVICES WILL BE MOUNTED

MECHANICAL VIBRATION, TO SIMULATE TRANSPORT ON MILITARY AND COMMERCIAL VEHICLES INCLUDING ROTARY-WING AND FIXED-WING AIRCRAFT

HIGH AND LOW TEMPERATURE OPERATION AND STORAGE TESTING, WHERE THE DEVICES ARE EXPOSED TO THE MAXIMUM EXPECTED OPERATING TEMPERATURES AND STORAGE TEMPERATURES

TEMPERATURE SHOCK, WHERE THE EQUIPMENT IS HEATED TO A HIGH TEMPERATURE AND TRANSITIONED INTO A VERY COLD TEMPERATURE WITHIN A FEW SECONDS

IMMERSION TESTING, BOTH SIMULATED AND TO ACTUAL DEPTHS TO 20 METERS

ADDITIONAL ENVIRONMENTAL TESTING MAY INCLUDE EXPOSURE TO SALT FOG, SAND OR DUST AND/OR ELECTRO-MAGNETIC TESTING



QUALITY ASSURANCE

STEINER EOPTICS MAINTAINS AN ISO 9001 QUALITY MANAGEMENT SYSTEM AND HAS CONTINUOUSLY MAINTAINED AN ISO 9001 QMS CERTIFICATION SINCE 2001. QUALITY PLAYS A VERY IMPORTANT ROLE AT STEINER AND STARTS WITH THE DESIGN AND DEVELOPMENT PROCESS. DURING THE INITIAL DESIGN REVIEW, OUR ENGINEERS EVALUATE THEIR DESIGN CONCEPT TO MAKE SURE THAT IT WILL MEET THE NECESSARY QUALITY REQUIREMENTS.

A PROVEN TRACK RECORD

STEINER EOPTICS HAS A PROVEN TRACK RECORD AS A GOVERNMENT CONTRACTOR SUPPLYING ELECTRO-OPTICAL SYSTEMS TO THE U.S. DEPARTMENT OF DEFENSE AS WELL AS OTHER ALLIED CUSTOMERS. IN ADDITION TO SUPPLYING PRODUCTS TO OUR MILITARY CUSTOMERS, STEINER HAS ALSO BEEN SELECTED TO PROVIDE DESIGN AND DEVELOPMENT SERVICES TO THE U.S. GOVERNMENT AND OTHER PRIME CONTRACTORS.

AN/PVS-21 | The World's Most Capable Night Vision System

DESIGNED FOR AGGRESSIVE SPECIAL OPERATION MISSIONS IN ANY ENVIRONMENT, THE AN/PVS-21 IS BATTLE PROVEN AND THE MOST RUGGED SYSTEM AVAILABLE. A PATENTED LOW-PROFILE DESIGN PROTRUDES 3-4 IN. LESS THAN CONVENTIONAL NIGHT VISION GOGGLES.

AN/PVS-21 OVERALL FEATURES

- Low-profile, see-through technology
- See-through optics instantly transition to bright light
- Enhanced situational awareness with sensor integration
- Large, un-intensified field-of-view for improved depth perception and CQB capability
- Eliminates vertigo and tunnel vision associated with conventional systems
- Reduced center of gravity for great comfort and extended wear
- Ideal for high-speed vehicle operation, parachute jumps and aggressive use over rough terrain



AN/PVS-21
LOW PROFILE NIGHT VISION GOGGLE

The AN/PVS-21 Low Profile Night Vision Goggle offers sensor integration, low-profile see through technology. This versatile design adapts to any mission or environment, whether in the air, on land or in the water.

UNIVERSAL REFOCUS FLIP LENS

This lens allows the operator to perform momentary close-in tasks such as map-reading or weapon clearing. The operator can then instantly return the NVG to infinity by flipping the lens back. Fits AN/PVS-14s, -7s, -15s, ANVIS -6, -9, and many other standard NVGs.

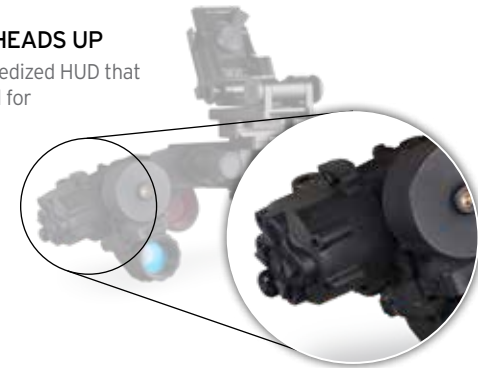
AN/PVS-21 REFOCUS FLIP LENS

This refocus lens is optimized for the AN/PVS-21.

CEHUD

CONFORMAL ENHANCED HEADS UP

A lightweight, compact and ruggedized HUD that is day or night capable. Designed for use with the AN/PVS-21 LPNV Goggle, Model 2740 Monocular and Model 2758 Dayviewer. Accepts SVGA/VGA format color video signals or NTSC/PAL black & white video signals. Fingertip adjustment of power, brightness, contrast and diopter adjustment.



COTM

CLIP ON THERMAL MODULE

The COTM injects its thermal imagery directly onto the eyepiece of the AN/PVS-21 LPNVG so the thermal image retains its black and white color for instant spectral-band differentiation by the operator. The COTM can also be used as a full-color capable Heads Up Display. SVGA, VGA, NTSC or PAL external video sources can be optically overlaid onto the I2 night vision scene of the AN/PVS-21 LPNVG for greater situational awareness. Instantly switches between internal thermal imagery to external video sources (weapon sight, maps, UAV video feeds, navigation or communications).



COTM OVERALL FEATURES

- Large field-of-view thermal imagery
- Improved detection, recognition, identification and situational awareness
- Day or night capability
- Small profile and light weight
- Quickly attaches to either side of the AN-PVS-21 LPNVG for greater versatility



FULL THERMAL

MIXED MODE

DECLUTTER

EDGE DETECT

Switchable Mode Presets provide four preset modes for optimum viewing. The operator can easily switch between Full Thermal / Mixed Mode / Declutter / Edge Detect.



NEW CINDER

This sleek, modern thermal sight is ideal for the night-time hunter. Available as a handheld or weapon mounted sight, Cinder offers best-in-class electronics and smartphone integration.

Electronic features, powered by CR123 or rechargeable batteries, include passive range estimation, picture-in-picture digital zoom and recoil-activated video recording. Cinder is fully configurable from your smart phone and is compatible with both Android and iPhones. Over-the-air (OTA) firmware updates run seamlessly in the background. Streaming video for transmitting live images to connective devices. Geotag integration with Google Maps for location tracking.



Item No.

300503

NEW CQT

CLOSE QUARTERS THERMAL

Exceptional innovation drives this unique, see-through thermal sight that overlays imagery onto a direct view of the real world. Quickly identify and engage targets. Ideal for situational awareness.

The CQT features a 2.5 MOA red dot reticle for precision targeting. Overlay thermal imaging is available in outline, patrol, and full thermal modes - all of which can seamlessly transition from daylight to total darkness.



Item No.

300352

IMAGING SYSTEMS

THE MOMENT OF TRUTH HAS NEVER BEEN SO CLEAR.

WITH THERMAL AND NIGHT-VISION CAPABILITY IN YOUR ARSENAL, YOU HAVE A CLEAR ADVANTAGE ON ANY TASK FROM OVERVIEW TO PURSUIT TO CQB.



+1.937.426.2341

AIMING LASERS | Laser and Light Combinations for Every Possible Scenario

DBAL-A⁴

DUAL BEAM AIMING LASER - ADVANCED⁴

Visible and infrared lasers, IR and white light illuminators: light and laser combinations for every possible scenario. High/low modes. Civilian and restricted models available.



Item No.*	Visible Pointer	IR Pointer	IR Illuminator	White Light LED
78000	<5 mW Green	<0.7 mW	<0.7 mW	500 Lumens
78001	<50 mW Green	<50 mW	<50 mW	500 Lumens
78002	<5 mW Red	<0.7 mW	<0.7 mW	500 Lumens
78003	<80 mW Red	<50 mW	<50 mW	500 Lumens

- VISIBLE LASER • IR LASER • IR LASER & ILLUMINATOR COMBINED • WHITE LIGHT LED
- WHITE LIGHT LED & VISIBLE LASER COMBINED • INCLUDES REMOTE CABLE PORTS FOR PADDLE SWITCH ACTIVATION AND VISIBLE LASER/WHITE LIGHT OVERRIDE

* Available in Black and Desert Sand

DBAL-A³

DUAL BEAM AIMING LASER - ADVANCED³

Available for restricted or commercial markets. Features an adjustable IR illuminator for better illumination at longer ranges, dual activation switches and high/low power modes.



Item No.*	Visible Pointer	IR Pointer	IR Illuminator
42095	<5 mW Red	<50 mW	<50 mW
52301	<80 mW Red	<50 mW	<50 mW
52302	<80 mW Red	<50 mW	<200 mW
52303	<5 mW Green	<50 mW	<50 mW
52307	<50 mW Green	<50 mW	<50 mW
52308	<50 mW Green	<50 mW	<200 mW
52325	<5 mW Green	<0.7 mW	<4 mW

- VISIBLE RED OR GREEN LASER • IR LASER & ILLUMINATOR COMBINED

* Available in Black and Desert Sand

DBAL OVERALL FEATURES

- Fully adjustable windage and elevation
- Available high and low power modes
- Integrated push-button switch and remote cable pressure-pad switch activation - tap and release for momentary activation; tap twice for 5-minute continuous ON
- Attaches to any Picatinny rail using a patented, self-adjusting Quick Release Mount
- Includes remote cable port
- Activation/low battery indicator light



LASER AIMING SOLUTIONS

NO CHALLENGE TOO TOUGH.

UNMATCHED VERSATILITY AND SUPERIOR OPERATIONAL LONGEVITY ARE PAIRED TOGETHER IN THE DBAL FAMILY OF LASERS TO PROVIDE MAXIMUM FUNCTIONALITY FOR MILITARY, LAW ENFORCEMENT AND RECREATIONAL USERS WORLDWIDE.



STEINER OPTICS PISTOL AND RIFLE LIGHT SERIES ENABLES USERS TO ENGAGE TARGETS ON A BATTLEFIELD OR DURING CLOSE-QUARTERS COMBAT. PROGRAMMABLE SWITCH FUNCTIONALITY ALLOWS THE USER TO PREPARE FOR ANY MISSION REQUIREMENT.

THE **DBAL-PL/DBAL-RL** FUNCTION IN TWO OPERATIONS MODES: VISIBLE AIMING LASER AND 400-LUMEN WHITE LIGHT LED; INFRARED POINTER AND ILLUMINATOR.

THE **SBAL-PL/SBAL-RL** IS A COMPACT LIGHT WITH RED OR GREEN LASER AND A 500-LUMEN WHITE LIGHT LED.

DBAL & SBAL OVERALL FEATURES

- Green or Red visible aiming laser
- IR laser and IR illuminator (DBAL only)
- White Light LED
- Co-aligned visible and IR aiming lasers (DBAL only)
- Fully adjustable windage and elevation
- Integrated adjustable Picatinny mount
- Powered by CR123A batteries
- Quick-release battery latch
- Ideal for daylight and no-light conditions
- Accurately engages target, even from awkward angles and in low-light conditions
- Programmable for any mission requirement



DBAL-PL
DUAL BEAM AIMING LASER
PISTOL LIGHT



DBAL-RL
DUAL BEAM AIMING LASER
RIFLE LIGHT



SBAL-PL
SINGLE BEAM AIMING LASER
PISTOL LIGHT



SBAL-RL
SINGLE BEAM AIMING LASER
RIFLE LIGHT

Item No.	Visible Pointer	IR Pointer	IR Illuminator*	White Light LED
----------	-----------------	------------	-----------------	-----------------

DBAL-PL

79050	<5 mW Green	<0.7 mW	600 mW	400 lumens
79040	<5 mW Red	<0.7 mW	600 mW	400 lumens

DBAL-RL

79055	<5 mW Green	<0.7 mW	600 mW	400 lumens
79045	<5 mW Red	<0.7 mW	600 mW	400 lumens

* At source

Item No.	Visible Pointer	White Light LED
----------	-----------------	-----------------

SBAL-PL

79060	<5 mW Green	500 lumens
79070	<5 mW Red	500 lumens

SBAL-RL

79065	<5 mW Green	500 lumens
79075	<5 mW Red	500 lumens



PUSH BUTTON MODE SELECTION. EACH MODEL HAS SEVERAL OPERATIONAL MODES, WHICH ARE USER-PROGRAMMABLE.



WHITE LIGHT AND IR ILLUMINATOR SIT BELOW AIMING LASER(S).





**CREATE THE ADVANTAGE.
CONTROL THE OUTCOME.**

IN A STRESSFUL, LIFE-THREATENING SITUATION, HAVING THE RIGHT EQUIPMENT CAN MEAN THE DIFFERENCE BETWEEN SUCCESS AND FAILURE. THE STEINER PISTOL AND RIFLE LIGHT SERIES PROVIDE WHAT YOU NEED TO GET THE JOB DONE.



+1.937.426.2341

DBAL-D²

DUAL BEAM AIMING LASER WITH IR LED ILLUMINATOR

High-definition aspherical, telescopic IR illuminator significantly enhances night-vision performance. Features a 2° to 30° adjustable illumination beam and offers an eye-safe means of illuminating distances greater than 1,000 meters.



Item No.*	Visible Laser	IR Pointer	IR Illuminator**
40301	<5 mW Green	<0.7 mW	<600 mW

• CO-ALIGNED VISIBLE & IR AIMING LASERS • CLASS 1 IR LASER WITH IR ILLUMINATOR COMBINED • SYSTEM CAN BE MOUNTED ON RIGHT, LEFT OR TOP OF WEAPON

*Available in Black and Desert Sand ** At Source



DBAL-I²

DUAL BEAM AIMING LASER - INTELLIGENT²

The most lightweight model in the DBAL Series, this "intelligent" laser provides extreme accuracy in low-light conditions and can be used with night-vision devices.



Item No.*	Visible Pointer	IR Pointer	IR Illuminator
40072	-	<50 mW	<50 mW
50406	<50 mW Green	<50 mW	-
50433	<5 mW Red	<0.7 mW	-
50436	<5 mW Green	<0.7 mW	-
50450	-	<0.7 mW	<4 mW

• TWO CONFIGURATIONS AVAILABLE: VISIBLE AND IR LASER POINTER & IR LASER POINTER AND IR ILLUMINATOR
• PRE-DRILLED MOUNTING HOLES FOR OPTIONAL SUB-MINIATURE RED DOT SIGHT OR MIL-SPEC TOP RAIL

* Available in Black and Desert Sand

DBAL OVERALL FEATURES

- Fully adjustable windage and elevation
- Available high and low power modes
- Integrated push-button switch and remote cable pressure-pad switch activation - tap and release for momentary activation; tap twice for 5-minute continuous ON
- Attaches to any Picatinny rail using the patented, self-adjusting Quick Release HT Mount
- Includes remote cable port
- Activation/low battery indicator light



QUICK RELEASE, SELF-ADJUSTING HT MOUNT ATTACHES TO ANY PICATINNY RAIL.



INTEGRATED PUSH-BUTTON ACTIVATION AND REMOTE CABLE-PRESSURE PAD SWITCH ACTIVATION.



CLOSE QUARTERS BATTLE LASERS

STEINER OPTICS **CLOSE QUARTERS BATTLE LASERS** PROVIDE RAPID, CLOSE-RANGE AIMING ACCURACY, BECAUSE ENEMIES, HOSTAGES, CIVILIANS OR TEAMMATES CAN BE CLOSELY INTERMINGLED DURING DANGEROUS CLOSE ENCOUNTERS. BEING EQUIPPED WITH A CQBL-1 LASER ENABLES FASTER AND MORE PRECISE TARGET ACQUISITION.

CQBL-1

One of the smallest and most rugged dual-function lasers available, the CQBL-1 is compatible with virtually every submachine gun and short-barrel rifle there is, and packs the output power needed for use on carbine, rifle and light machine gun systems.



Item No.*	Visible Pointer	IR Pointer
60603	<5 mW Red	<0.7mW

• CO-ALIGNED VISIBLE RED LASER AND IR AIMING LASER • INTEGRATED PUSH-BUTTON SWITCH AND REMOTE CABLE PRESSURE-PAD SWITCH ACTIVATION - TAP AND RELEASE FOR MOMENTARY ACTIVATION; TAP TWICE FOR 5-MINUTE CONTINUOUS ON • DUAL FUNCTION/SINGLE POWER MODE • INTEGRATED PICATINNY MOUNT • REMOTE CABLE PORT

* Available in Black and Desert Sand

OFFSET TACTICAL AIMING LASERS

THE **OTAL-C** IS THE "CLASSIC" VERSION OF THE OFFSET TACTICAL AIMING LASER SERIES. RUGGED AND COMPACT, THE OTAL-C LASER IS USED BY MILITARY AND LAW ENFORCEMENT AGENCIES WORLDWIDE AND HAS DEVELOPED A RELIABLE REPUTATION. IT MOUNTS BEHIND THE FRONT SIGHT ON M-4 STYLE RIFLES AND THE LASER CLEARS THE FRONT SIGHT. THE COMPACT DESIGN MINIMIZES WEIGHT AND THE LOW PROFILE MAKES IT EASY TO MOUNT IN FRONT OF SCOPES, HOLOGRAPHIC SIGHTS OR NIGHT VISION DEVICES.

THE **OTAL-A** SERIES IS THE "ADVANCED" GENERATION OF THE OTAL-C. THE OTAL-A CAN BE MOUNTED AT THE 12 O'CLOCK POSITION ON AN M-4 WEAPON SYSTEM WITH A STANDARD FRONT SIGHT BASE. THE LASER IS OFFSET JUST ENOUGH TO CLEAR THE FRONT SIGHT BASE.

OTAL-C

Designed for the M-4 platform, the visible red laser beam on this model projects around the front sight. It can be mounted in front of scopes, holographic sights and night-vision devices.



Item No.*	Weight	Visible Pointer	IR Pointer
19215	4.9 oz.	<5 mW Red	-
19217	4.9 oz.	-	<0.7 mW

* Available in Black

OTAL-A

This "advanced" model forges ahead with innovative enhancements.



Item No.*	Weight	Visible Pointer	IR Pointer
19146	6 oz.	<5 mW Green	-
19241	6 oz.	<50 mW Green	-

* Available in Black

OTAL SERIES OVERALL FEATURES

- Fully adjustable windage and elevation
- Quick-release Mount
- Push-button or remote cable pad activation
- Momentary or constant ON operation (only on OTAL-A)
- Remote cable port

MULTI-SPECTRAL BEACONS | Thermal and Other Covert Spectrums



MCID

With its low-profile design, the MCID matches the shape of a helmet for secure attachment and can also be mounted to MOLLE vests, packs or vehicles. Versions are available with mid-wave infrared (MWIR), near infrared (NIR) and short wave infrared (SWIR), or MWIR, NIR and Visible (VIS).



NOVA

The NOVA Beacon is a multi-spectral combat ID beacon with thermal, NIR and white LED emitters that covertly marks blue force personnel and vehicles. In thermal mode, THE NOVA BEACON emits no visible signature and is undetectable by conventional night vision. The operator can easily set up the NOVA for NIR, thermal, visible white light or combinations of thermal and NIR.



NEW HMB

The high-quality, low-cost, palm-sized Helmet Mounted Beacon features visible, short-wave infrared (SWIR) and near infrared (NIR) spectrums. Easily seen up to 10 km by U.S. and NATO targeting pods and drones. Provides tactical advantages for covert operations.



..... CUSTOMIZABLE BEACONS

Beacons can be customized with combinations of Visible, Thermal, SWIR or NIR options.



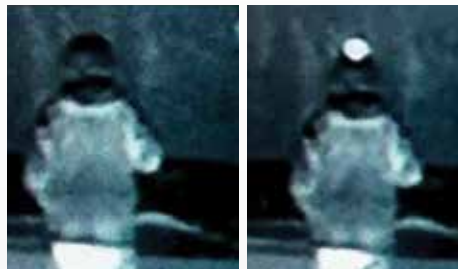
BACK / NOT FLASHING



BACK / FLASHING

STAR BEACON

The STAR Beacon is a state-of-the-art thermal IFF beacon that is undetectable by the naked eye, night vision goggles or commercial video cameras. It is visible to MWIR targeting pods for up to 8 nautical miles (15 km). Small with a low-profile that easily mounts to helmets and vehicles.



STAR OFF

STAR ON



BEACONS

**CRITICAL MISSION.
TOUGH CONDITIONS.
THAT'S WHEN YOU
SHOW UP.**

QUICKLY IDENTIFY BLUE FORCE PERSONNEL, VEHICLES AND AREAS WITH BATTLE-PROVEN BEACONS THAT ARE INVISIBLE TO HOSTILE AND UNMISTAKABLE TO YOU.

AIRFIELD BEACON

The Airfield Beacon's UHF transceiver is programmed with seven discrete channels and can be remotely activated from up to 6 km away. With standard night vision goggles it can be detected from 15 km. The "All" setting lets the operator turn on every beacon regardless of channel. Beacons can be placed on the ground or attached to stakes with internal magnets.



+1.937.426.2341

Mk3 BATTLE LIGHT

The impressive Mk3 features a 600 mW eye-safe IR LED and a 500-lumen white light LED with high/low and strobe modes.



Item No.*	IR Illuminator	White Light
60455	<600 mW	500 lumens

* Available in Black

Mk4 BATTLE LIGHT

The modular, low-profile design of this 500-lumen weapon light provides interchangeable switch options and places the light close to the weapon body, nearly eliminating the rifle barrel shadow and enhancing weapon-handling switchology. It can operate on two CR123A batteries.



Item No.*	White Light LED
60460	500 lumens

* Available in Black

THESE LIGHTS ARE PERFECT ACCESSORIES FOR ANY MISSION WHERE EVERY OUNCE COUNTS. IT'S NOT JUST ABOUT THE LUMENS - IT'S ABOUT THE QUALITY OF LIGHT. BATTLE HARDENED AND MILITARY GRADE, THESE FLASHLIGHTS ARE RUGGED, LOW PROFILE AND PRODUCE A STUNNING BEAM OF BRILLIANT WHITE LIGHT WITHOUT ANY DIM OR SHADOWED AREAS. THESE BATTLE LIGHTS CAN BE HANDHELD OR WEAPON-MOUNTED AND ARE FULLY OPERATIONAL FROM 20,000 FEET ABOVE SEA LEVEL TO 20 METERS BELOW THE OCEAN'S SURFACE.

BATTLE LIGHTS OVERALL FEATURES

- Integrated push-button operation
- Handheld or weapon-mounted capability
- Recoil-resistant white light LED
- Robust waterproof construction
- Temperature range: -10° C to +65° C

Mk5 BATTLE LIGHT

One of the brightest handheld flashlights available today, this powerful light has a 800-lumen white light LED and illuminates up to 400 meters.



Item No.*	White Light LED
76000	800 lumens

* Available in Black



ILLUMINATION

HOW GOOD GUYS BEAT THE DARK SIDE.

WHEN THE SITUATION CALLS FOR ILLUMINATION, BLAST THE SHADOWED AREAS WITH A BATTLE LIGHT SO YOU CAN HAVE CONFIDENCE IN ACCURATELY IDENTIFYING YOUR TARGET.



+1.937.426.2341



MODERN-DAY WARFIGHTERS DISRUPT ENEMY OPERATIONS BY DELIVERING PRECISE, LONG-RANGE FIRE ON SELECTED TARGETS. SPECIAL OPERATIONS, POLICE AND SWAT UNITS PROTECT INNOCENT CIVILIANS IN RESIDENTIAL HOSTAGE CRISES, HIGH-RISK SEARCH/ARREST WARRANTS AND OTHER DOMESTIC SITUATIONS. IN ALL OF THESE SITUATIONS, STEINER OPTICS' HIGHLY SOPHISTICATED ILLUMINATION TOOLS AID IN THE DETECTION AND IDENTIFICATION OF THREATS BY ALLOWING THE USER TO MOVE, SHOOT AND COMMUNICATE EFFECTIVELY IN TOTAL DARKNESS WHILE ENSURING MAXIMUM EFFECTIVENESS WITH MINIMUM RISK.

SPIR

This Special Purpose IR LED illuminator is equipped with a high-definition, aspherical telescopic illuminator. It can be used in conjunction with night-vision equipped spotting scopes and deployed as a handheld or weapon-mounted IR illuminator.

Item No.*	Illuminator
60480	<600 mW

- INTEGRATED ACTIVATION SWITCH • ACTIVATION/MODE SELECTOR SWITCH
- INTEGRATED PUSH-BUTTON SWITCH & REMOTE CABLE PRESSURE PAD SWITCH ACTIVATION - TAP AND RELEASE FOR MOMENTARY ACTIVATION; TAP TWICE FOR 5-MINUTE CONTINUOUS ON
- HIGH & LOW POWER MODES

* Available in Black



MBS-AA BORELIGHT

Quality engineered for a flawlessly centered dot every time, this borelight provides a precise, accurate alignment in the field without firing a single round of ammo. Includes a visible red laser and stainless steel bore rods.

Item No.*	Visible Laser
3170635	<5 mW Red

- FULLY ADJUSTABLE FOR WINDAGE & ELEVATION
- ROTARY SWITCH FOR EASY OPERATION • INCLUDES ARBORS FOR THESE CALIBERS: .22/.223/5.56 MM OVERSIZE; .223/5.56MM; 7MM; .30/.308/30-06/7.62MM; .38/.357/9MM; AND .40/10MM/.45/50

* Available in Black





Highly collimated illuminator significantly enhances night vision performance.

SPiR illuminating hilltops at 800m

OWN THE NIGHT.

WITH A RANGE OF >1000 METERS, THE SPiR WILL DETECT AND IDENTIFY THREATS AT GREATER DISTANCES THAN ANY OTHER TACTICAL IR ILLUMINATOR. IT CAN BE HAND-OPERATED OR WEAPON-MOUNTED.

+1.937.426.2341



TOR SERIES | Combat Worthy Lights and Lasers

THE TOR SERIES ARE MIL-GRADE ALUMINUM AND STEINER STRONG, BUILT TO EXPOSE, BLIND AND TARGET WITH MAXIMUM IMPACT. UP TO ANY CHALLENGE. JUST LIKE YOU.

TOR OVERALL FEATURES

- Anodized aluminum housing
- Adjustable for windage/elevation
- Lightweight and compact

TOR FUSION

Combines both white light illumination with either a red or green aiming laser.

Item No.	Visible Pointer	White Light LED
300389	<5 mW Green	500 Lumens
300390	<5 mW Red	500 Lumens

TOR MINI

Miniature rail-mounted laser available with either red or green lasers.

Item No.	Visible Pointer
300387	<5 mW Green
300388	<5 mW Red

TOR TORCH

A high-powered white light LED illuminator.

Item No.	White Light LED
300391	500 Lumens



NEW TOR FUSION IR

Bright white illumination with infrared laser pointer.

Item No.	IR Pointer	White Light LED
300443	<0.7 mW	500 Lumens

NEW TOR MINI IR

Mini rail-mounted infrared laser.

Item No.	IR Pointer
300442	<0.7 mW



LEFT AND RIGHT FIRE BUTTONS FOR AMBIDEXTROUS USE



POWERFUL WHITE LIGHT FOR QUICK TARGET ACQUISITION



TOR FUSION COMBINES POWERFUL WHITE LIGHT ILLUMINATION WITH ADJUSTABLE LASER POWER



**BATTLE HARDENED.
CIVILIAN READY.**

AVAILABLE AS A LIGHT, LASER OR LIGHT/LASER
COMBINATION, THE TOR SERIES PROVIDES SPOT-ON
ACCURACY AND ILLUMINATION.



+1.937.426.2341

EOPTICS SPECIFICATIONS

IMAGING SYSTEMS

LASERS

PHYSICAL FEATURES

OPTICAL PERFORMANCE

ENVIRONMENTAL

	AN/PVS-21* 2777-0003 KIT 2777-0240	CEHUD 100401	COTM 300221	CINDER 300503	CQT 300352
ADJUSTMENTS	Tilt - 14° on the goggle IPD - 55 mm to 80mm	Tilt - 14° on the goggle IPD - 55 mm to 80mm	-	-	-
WEIGHT	741 grams 26.1 ounces	Display Module - 44 g / 2.5 oz.; Helmet-Mounted Power Module - 250 g / 8.8 oz.; Vest/Pocket Power Module - 250 g / 8.8 oz.	170 grams 6 ounces	-	390 grams 13.7 ounces
AUXILIARY ILLUMINATION SOURCE	Two IR LEDs - Off/Low/High	-	-	-	-
BATTERIES	AA battery 1.5-3.6V alkaline or lithium	(4) AA batteries	(4) CR 123	(2) CR 123 (1) Rechargeable 18650	(2) CR 123A
MOUNTS	Precision, quick-release mounting on helmets and head harnesses. Integrated HUD port for sensor integration	Precision, quick-release mounting on helmets and head harnesses. Integrated HUD port for sensor integration. Power Module Mount	-	Handheld Picatinny Rail	MIL-STD 1913 / Picatinny rail
CONTROLS	-	On/Off, Brightness, Contrast and Diopter	-	-	-
DIMENSIONS	Less than 8 cm in depth	72 x 129 x 39mm	COTM Module 46 x 43 x 117 mm Battery Pack 85 x 195 x 28 mm	-	133 x 77 x 53mm
DISPLAY	-	Color capable SVGA	-	Full Color OLED	SVGA OLED (Green)
VIDEO INPUTS	-	Analog SVGA display in 16.7 million colors NTSC or PAL display in 256 gray shades monochrome	VGA, SVGA, NTSC or PAL (factory configurable)	Wireless: 802.11 b/g/n, H.264 and MPEG4 compression Wired: SMA for NTSC or PAL analog video export	-
RESOLUTION	-	SVGA - 800x600	Thermal: 320 x 240 Display: 800 x 600	Thermal: 320 x 240 Display: 800 x 600	Thermal: 320 x 256
THERMAL CAMERA SPECTRUM	-	-	8 to 12 μm	-	12 μm
ANGULAR FIELD-OF-VIEW (THROUGH GOGGLES)	40°	SVGA - 31.7° VGA - 25.6° View is similar to 17-in. monitor at 2.3 ft. distance	31.7° SVGA 25.6° VGA	-	-
UNAIDED FIELD OF VIEW (FOV)	165° horizontal and 90° vertical	-	-	-	12° horizontal and 9.6° vertical
OBJECTIVE FOCUS	33 cm to infinity	-	Fixed from 5 meters to infinity	-	-
EXIT PUPIL	10 mm on axis	-	-	-	-
EYE RELIEF	15 mm	-	-	25 mm 40 mm	90 mm
OPERATING TEMPERATURE RANGE	-30°C (-22°F) to 52°C (126°F)	-30°C (-22°F) to 52°C (126°F)	-30°C (-22°F) to 50°C (140°F)	-	-40°C (-40°F) to 70°C (158°F)
STORAGE TEMPERATURE RANGE	-55°C (-67°F) to 65°C (149°F)	-40°C (-40°F) to 65°C (146°F)	-40°C (-40°F) to 60°C (149°F)	-	-
OPERATING ALTITUDE (Sea Level to 35,000 ft.)	Sea Level to 35,000 ft.	Sea Level to 30,000 ft.	Sea Level to 30,000 ft.	-	-
IMMERSION/WATERPROOF	3 meter standard, 10 meter optional	Up to 10 meters	IP67 Rating	IP67 Rating	20 m for 2 Hours

*Additional options available

UNIVERSAL REFOCUS LENS 100104

ANGULAR FIELD OF VIEW

FOCUS RANGE

APPLICATIONS

DIMENSIONS

WEIGHT

AN/PVS-21 REFOCUS LENS 2778-0301

ANGULAR FIELD OF VIEW

FOCUS RANGE

APPLICATIONS

DIMENSIONS

LASER TYPE

POWER OUTPUT

WAVELENGTH

BEAM DIVERGENCE

RANGE/VISIBILITY*

	SBAL-PL 79060	SBAL-PL 79070	SBAL-RL 79065	SBAL-RL 79075
VISIBLE RED/GREEN LASER IR LASER POINTER IR ILLUMINATOR	Green - Class 3R - -	Red - Class 3R - -	Green - Class 3R - -	Red - Class 3R - -
VISIBLE RED / GREEN LASER IR LASER POINTER IR ILLUMINATOR WHITE LIGHT	<5 mW - - 500 lumens	<5 mW - - 500 lumens	<5 mW - - 500 lumens	<5 mW - - 500 lumens
VISIBLE RED LASER VISIBLE GREEN LASER IR LASER POINTER IR ILLUMINATOR	- 520 nm +/-3% - -	635 nm +/-3% - -	- - 520 nm +/-3% -	635 nm +/-3% - -
VISIBLE LASER IR LASER POINTER IR ILLUMINATOR WHITE LIGHT	<0.8 mRad - - 22°	<0.8 mRad - - 22°	<0.8 mRad - - 22°	<0.8 mRad - - 22°
VISIBLE RED LASER VISIBLE GREEN LASER IR LASER POINTER IR ILLUMINATOR WHITE LIGHT	- 35 m - - 100 m	25 m - - 100 m	- - 35 m - 100 m	25 m - -
TEMPERATURE BATTERY BATTERY LIFE (MODE DEPENDENT) MATERIAL COLOR WEIGHT (WITH BATTERY) (OZ.) DIMENSIONS (IN.) (LxWxH) WATERPROOF MOUNT WINDAGE & ELEVATION ADJUSTMENT ACTIVATION SWITCH REMOTE CABLE PRESSURE PAD SPECIAL FEATURES	-20° C to +65° C CR123A (1) >2 Hours Aircraft Aluminum Black 4.6 3.46 x 1.32 x 1.62 Submersible to 5 m Standard Pistol or M1913 Rails Yes Integrated Push Button -	-40° C to +65° C CR123A (1) >2 Hours Aircraft Aluminum Black 4.6 3.46 x 1.32 x 1.62 Submersible to 5 m Standard Pistol or M1913 Rails Yes Integrated Push Button -	-20° C to +65° C CR123A (1) >2 Hours Aircraft Aluminum Black 4.6 3.5 x1.3 x 1.4 Submersible to 5 m M1913 Rails Yes Integrated Push Button(s) and Remote Cable -	-40° C to +65° C CR123A (1) >2 Hours Aircraft Aluminum Black 4.6 3.5 x1.3 x 1.4 Submersible to 5 m M1913 Rails Yes Integrated Push Button(s) and Remote Cable -
QUICK-RELEASE BATTERY CAP, RECOIL RESISTANT WHITE LIGHT LED TECHNOLOGY	Quick-Release Battery Cap, Recoil Resistant White Light LED Technology	Quick-Release Battery Cap, Recoil Resistant White Light LED Technology	Quick-Release Battery Cap, Recoil Resistant White Light LED Technology	Quick-Release Battery Cap, Recoil Resistant White Light LED Technology

Specifications subject to change without notice.
*Range may vary depending on light and/or atmospheric conditions and target reflectivity. Visible laser range is measured for daytime. Infrared laser range is measured for night.



STEINER-DEFENSE.COM

	DBAL-PL 79050	DBAL-PL 79040	DBAL-RL 79055	DBAL-RL 79045	DBAL-D2 40301*	DBAL-I2 400721*	DBAL-I2 50406¹	DBAL-I2 50433*	DBAL-I2 50436*	
LASER TYPE	VISIBLE RED/GREEN LASER	Green - Class 3R	Red - Class 3R	Green - Class 3R	Red - Class 3R	Green - Class 3R	-	Green - Class 3R	Red - Class 3R	Green - Class IIIa
	IR LASER POINTER	Class 1	Class I	Class 1	Class 1	Class 1	Class 3B	Class 1	Class 1	Class I
	IR ILLUMINATOR	-	-	-	-	-	Class 3B	-	-	-
POWER OUTPUT	VISIBLE RED/GREEN LASER	<5 mW	<5 mW	<5 mW	<5 mW	<5 mW	-	<50 mW	<5 mW	<5 mW
	IR LASER POINTER	<0.7 mW	<0.7 mW	<0.7 mW	<0.7 mW	<0.7 mW	<50 mW	<50 mW	<0.7 mW	<0.7 mW
	IR ILLUMINATOR	<600 mW **	<600 mW **	<600 mW **	<600 mW **	<600 mW **	<50 mW	-	-	-
	WHITE LIGHT	400 lumens	400 lumens	400 lumens	400 lumens	-	-	-	-	-
WAVELENGTH	VISIBLE RED LASER	-	640 nm +/- 3%	-	640 nm +/- 2%	-	-	-	640 nm +/- 3%	-
	VISIBLE GREEN LASER	525 nm +/- 3%	-	525 mW +/- 3%	525 nm +/- 3%	525 nm +/- 3%	-	525 nm +/- 3%	-	525 nm +/- 3%
	IR LASER POINTER	840 nm +/- 3%	840 nm +/- 3%	840 nm +/- 3%	840 nm +/- 3%	840 nm +/- 3%	840 nm +/- 3%	840 nm +/- 3%	840 nm +/- 3%	840 nm +/- 3%
	IR ILLUMINATOR	840 nm +/- 3%	840 nm +/- 3%	840 nm +/- 3%	840 nm +/- 3%	840 nm +/- 3%	840 nm +/- 3%	840 nm +/- 3%	840 nm +/- 3%	840 nm +/- 3%
BEAM DIVERGENCE	VISIBLE LASER	<0.8 mRad	<0.8 mRad	<0.8 mRad	<0.8 mRad	<0.8 mRad	-	<0.8 mRad	<0.8 mRad	<0.8 mRad
	IR LASER POINTER	<0.8 mRad	<0.8 mRad	<0.8 mRad	<0.8 mRad	<0.8 mRad	<0.8 mRad	<0.8 mRad	<0.8 mRad	<0.8 mRad
	IR ILLUMINATOR	18°	18°	18°	18°	2° to 30°	1-195 mRad	-	-	-
	WHITE LIGHT	22°	22°	18°	18°	-	-	-	-	-
RANGE/VISIBILITY*	VISIBLE RED LASER	-	25 m	-	25 m	-	-	25 m	-	-
	VISIBLE GREEN LASER	35 m	-	35 m	-	35 m	-	100 m	-	35 m
	IR LASER POINTER	1400 m	1400 m	1400 m	1400 m	1400 m	2500 m	2500 m	1400 m	1400 m
	IR ILLUMINATOR	1400 m	1400 m	1400 m	1400 m	1400 m	2500 m	-	-	-
	WHITE LIGHT	100 m	100 m	100 m	100 m	-	-	-	-	-
TEMPERATURE		-20° C to +65° C	-40° C to +65° C	-20° C to +65° C	-40° C to +65° C	+4° C to +65° C	-40° C to +65° C	+4° C to +65° C	-40° C to +65° C	+4° C to +65° C
BATTERY		CR123A (2)	CR123A (2)	CR123A (2)	CR123A (2)	CR123A	CR123A	CR123A	CR123A	CR123A
BATTERY LIFE (MODE DEPENDENT)		>2 Hours	>2 Hours	>1.75 Hours	>1.75 Hours	>3 Hours	>3 Hours	>3 Hours	>3 Hours	>3 Hours
MATERIAL		Aircraft Aluminum	Aircraft Aluminum	Aircraft Aluminum	Aircraft Aluminum	Aircraft Aluminum	Aircraft Aluminum	Aircraft Aluminum	Aircraft Aluminum	Aircraft Aluminum
COLOR		Black	Black	Black	Black	Black / Desert Sand	Black / Desert Sand	Black	Black / Desert Sand	Black / Desert Sand
WEIGHT (WITH BATTERY) (OZ.)		5.4	5.4	5.4	5.4	12.5	8	8	8	8
DIMENSIONS (IN.) (LxWxH)		3.46 x 1.62 x 1.32	3.46 x 1.62 x 1.32	3.5 x 1.3 x 1.4	3.5 x 1.3 x 1.4	3.95 x 3.37 x 1.59	3.5 x 2.75 x 1.59	3.5 x 2.75 x 1.59	3.5 x 2.75 x 1.59	3.5 x 2.75 x 1.59
WATERPROOF		Submersible to 5 m	Submersible to 5 m	Submersible to 5 m	Submersible to 5 m	Submersible to 5 m	Submersible to 5 m	Submersible to 5 m	Submersible to 5 m	Submersible to 5 m
MOUNT		Standard Pistol or M1913 Rails	Standard Pistol or M1913 Rails	M1913 Rails	M1913 Rails	OD HT Mount	OD HT Mount	OD HT Mount	OD HT Mount	OD HT Mount
WINDAGE & ELEVATION ADJUSTMENT		Yes	Yes	Yes	Yes	Yes	Yes	Yes	Yes	Yes
ACTIVATION SWITCH		Integrated Push Button	Integrated Push Button	Integrated Push Button and Remote Cable	Integrated Push Button and Remote Cable	Integrated Push Button and Remote Cable	Integrated Push Button and Remote Cable	Integrated Push Button and Remote Cable	Integrated Push Button and Remote Cable	Integrated Push Button and Remote Cable
REMOTE CABLE PRESSURE PAD		-	-	-	-	Yes	Yes	Yes	Yes	Yes
SPECIAL FEATURES		Quick-Release Battery Cap, Co-Aligned Visible & IR Lasers, Recoil Resistant White Light LED Technology	Quick-Release Battery Cap, Co-Aligned Visible & IR Lasers, Recoil Resistant White Light LED Technology	Quick-Release Battery Cap, Co-Aligned Visible & IR Lasers, Recoil Resistant White Light LED Technology	Quick-Release Battery Cap, Co-Aligned Visible & IR Lasers, Recoil Resistant White Light LED Technology	Co-aligned Visible & IR Aiming Lasers	Pre-Drilled Mounting For Optional Red Dot Sight or MIL-STD 1913 Top Rail	Pre-Drilled Mounting For Optional Red Dot Sight or MIL-STD 1913 Top Rail	Pre-Drilled Mounting For Optional Red Dot Sight or MIL-STD 1913 Top Rail	Pre-Drilled Mounting For Optional Red Dot Sight or MIL-STD 1913 Top Rail

¹Restricted
*Also Available in Desert Sand
**At the source

Specifications subject to change without notice.
*Range may vary depending on light and/or atmospheric conditions and target reflectivity.
Visible laser range is measured for daytime. Infrared laser range is measured for night.

EOPTICS SPECIFICATIONS

LASERS

	DBAL-I2 50450	DBAL-A2 40090[†]	DBAL-A3 42095^{†*}	DBAL-A3 52301[†]	DBAL-A3 52302^{†*}	DBAL-A3 52303^{†*}	DBAL-A3 52307^{†*}
LASER TYPE	VISIBLE RED/GREEN LASER	-	Red - Class 3R	Red - Class 3R	Red - Class 3B	Red - Class IIIb	Green - Class 3R
	IR LASER POINTER	Class 1	Class 3B	Class 3B	Class 3B	Class 3B	Class 3B
	IR ILLUMINATOR	Class 3R	Class 3B	Class 3B	Class 3B	Class 3B	Class 3B
POWER OUTPUT	VISIBLE RED/GREEN LASER	-	<5 mW	<5 mW	<80 mW	<80 mW	<5 mW
	IR LASER POINTER	<0.7 mW	<50 mW	<50 mW	<50 mW	<50 mW	<50 mW
	IR ILLUMINATOR	<4 mW	<50 mW	<50 mW	<50 mW	<200 mW	<50 mW
	WHITE LIGHT	-	-	-	-	-	-
WAVELENGTH	VISIBLE RED LASER	-	640 nm+/-3%	640 nm+/-3%	640 nm+/-3%	640 nm+/-3%	-
	VISIBLE GREEN LASER	-	-	-	-	-	525 nm +/-3%
	IR LASER POINTER	840 nm +/- 3%	840 nm +/- 3%	840 nm +/- 3%	840 nm +/- 3%	840 nm +/- 3%	840 nm +/- 3%
	IR ILLUMINATOR	840 nm +/- 3%	840 nm +/- 3%	840 nm +/- 3%	840 nm +/- 3%	840 nm +/- 3%	840 nm +/- 3%
BEAM DIVERGENCE	VISIBLE LASER	-	<0.8 mRad	<0.8 mRad	<0.8 mRad	<0.8 mRad	<0.8 mRad
	IR LASER POINTER	<0.8 mRad	<0.8 mRad	<0.8 mRad	<0.8 mRad	<0.8 mRad	<0.8 mRad
	IR ILLUMINATOR	95-195 mRad	1-100 mRad	1-195 mRad	1-195 mRad	1-195 mRad	1-195 mRad
	WHITE LIGHT	-	-	-	-	-	-
RANGE/VISIBILITY*	VISIBLE RED LASER	-	25 m	25 m	120 m	120 m	-
	VISIBLE GREEN LASER	-	-	-	-	-	35 m
	IR LASER POINTER	1400 m	2500 m	2500 m	2500 m	2500 m	2500 m
	IR ILLUMINATOR	175 m	2500 m	2500 m	2500 m	4000 m	2500 m
	WHITE LIGHT	-	-	-	-	-	-
TEMPERATURE	-40° C to +65° C	-40° C to +65° C	-40° C to +65° C	-40° C to +65° C	-40° C to +65° C	-20° C to +65° C	-20° C to +65° C
BATTERY	CR123A	CR123A	CR123A	CR123A	CR123A	CR123A	CR123A
BATTERY LIFE (MODE DEPENDENT)	>3 Hours	>3 Hours	>3 Hours	>3 Hours	>3 Hours	>3 Hours	> 3 Hours
MATERIAL	Aircraft Aluminum	Aircraft Aluminum	Aircraft Aluminum	Aircraft Aluminum	Aircraft Aluminum	Aircraft Aluminum	Aircraft Aluminum
COLOR	Black	Black	Black	Black	Black	Black	Black
WEIGHT (WITH BATTERY) (OZ.)	8	8	8.29	8.29	8.29	8.29	8.29
DIMENSIONS (IN.) (LxWxH)	3.5 x 2.75 x 1.59	3.5 x 2.75 x 1.59	3.72 x 2.75 x 1.68	3.72 x 2.75 x 1.68	3.72 x 2.75 x 1.68	3.72 x 2.75 x 1.68	3.72 x 2.75 x 1.68
WATERPROOF	Submersible to 5 m	Submersible to 5 m	Submersible to 20 m	Submersible to 20 m	Submersible to 20 m	Submersible to 20 m	Submersible to 5 m
MOUNT	OD HT Mount	OD HT Mount	OD HT Mount	OD HT Mount	OD HT Mount	OD HT Mount	OD HT Mount
WINDAGE & ELEVATION ADJUSTMENT	Yes	Yes	Yes	Yes	Yes	Yes	Yes
ACTIVATION SWITCH	Integrated Push Button and Remote Cable	Integrated Push Button and Remote Cable	Integrated Push Button and Remote Cable	Integrated Push Button and Remote Cable	Integrated Push Button and Remote Cable	Integrated Push Button and Remote Cable	Integrated Push Button and Remote Cable
REMOTE CABLE PRESSURE PAD	Yes	Yes	Yes	Yes	Yes	Yes	Yes
SPECIAL FEATURES	Pre-Drilled Mounting For Optional Red Dot Sight or MIL-STD 1913	Pre-Drilled Mounting For Optional Red Dot Sight or MIL-STD 1913	Pre-Drilled Mounting For Optional Red Dot Sight or MIL-STD 1913	Pre-Drilled Mounting For Optional Red Dot Sight or MIL-STD 1913	Pre-Drilled Mounting For Optional Red Dot Sight or MIL-STD 1913	Pre-Drilled Mounting For Optional Red Dot Sight or MIL-STD 1913	Pre-Drilled Mounting For Optional Red Dot Sight or MIL-STD 1913
	Top Rail	Top Rail	Top Rail	Top Rail	Top Rail	Top Rail	Top Rail

[†]Restricted

*Also Available in Desert Sand

Specifications subject to change without notice.

*Range may vary depending on light and/or atmospheric conditions and target reflectivity. Visible laser range is measured for daytime. Infrared laser range is measured for night.



	DBAL-A3 52308*	DBAL-A3 52325*	DBAL-A4 78000*	DBAL-A4 78001†*	DBAL-A4 78002*	DBAL-A4 78003†*	CQBL-1 60603*	OTAL-A 19146
LASER TYPE	VISIBLE RED OR GREEN Green - Class 3B IR LASER POINTER Class 3B IR ILLUMINATOR Class 3B	Green - Class 3R Class 1 Class 3R	Green - Class 3R Class 1 Class 1	Green - Class 3B Class 3B Class 3B	Red - Class 3R Class 1 Class 1	Red - Class 3B Class 3B Class 3B	Red - Class 3R Class 1 -	Green - Class 3R - -
POWER OUTPUT	VISBILE RED / GREEN LASER <50 mW IR LASER POINTER <50 mW IR ILLUMINATOR <200 mW WHITE LIGHT -	<5 mW <0.7 mW <4 mW	<5 mW <0.7 mW <0.7 mW	<50 mW <50 mW <50 mW	<5 mW <0.7 mW <0.7 mW	<80 mW <50 mW <50 mW	<5 mW <0.7 mW -	<5 mW - -
WAVELENGTH	VISIBLE RED LASER - VISIBLE GREEN LASER 525 nm +/- 3% IR LASER POINTER 840 nm +/- 3% IR ILLUMINATOR 840 nm +/- 3%	- 525 nm +/- 3% 840 nm +/- 3%	- 525 nm +/- 3% 840 nm +/- 3%	- 525 nm +/- 3% 840 nm +/- 3%	- 640 nm +/- 3% 840 nm +/- 3%	640 nm +/- 3% - 840 nm +/- 3%	640 nm +/- 3% - 840 nm +/- 3%	- 525 nm +/- 3% -
BEAM DIVERGENCE	VISIBLE LASER <0.8 mRad IR LASER POINTER <0.8 mRad IR ILLUMINATOR 1-195 mRad WHITE LIGHT -	<0.8 mRad <0.8 mRad 95-195 mRad	<0.5 mRad <0.5 mRad 4°/90°	<0.5 mRad <0.5 mRad 4°/90°	<0.5 mRad <0.5 mRad 4°/90°	<0.5 mRad <0.5 mRad 4°/90°	<0.8 mRad <0.8 mRad -	<0.8 mRad - -
RANGE/VISIBILITY*	VISIBLE RED LASER - VISIBLE GREEN LASER 100 m IR LASER POINTER 2500 m IR ILLUMINATOR 4000 m WHITE LIGHT -	- 35 m 1400 m 175m	- 100 m 1400 m 1400 m	- 100 m 2500 m 2500 m	25 m - 1400 m 1400 m	25 m - 2500 m 400 m	25 m - 1400 m -	- 35 m - -
BATTERY LIFE (MODE DEPENDENT)	TEMPERATURE -20° C to +65° C BATTERY CR123A >5 Hours	-20° C to +65° C CR123A >5 Hours	-20° C to +65° C CR123A (2) >3 Hours	-20° C to +65° C CR123A (2) >3 Hours	-40° C to +65° C CR123A (2) >3 Hours	-40° C to +65° C CR123A (2) >3 Hours	-40° C to +65° C CR123A >3 Hours	+4° C to +65° C CR123A > 3 Hours
WEIGHT (WITH BATTERY) (OZ.)	MATERIAL Aircraft Aluminum COLOR Black	Aircraft Aluminum Black	Aircraft Aluminum Black	Aircraft Aluminum Black	Aircraft Aluminum Black	Aircraft Aluminum Black	Aircraft Aluminum Black	Aircraft Aluminum Black
DIMENSIONS (IN.) (LxWxH)	8.29 3.72 x 2.75 x 1.68	8.29 3.72 x 2.75 x 1.68	12 4.5 x 3.4 x 2.1	12 4.5 x 3.4 x 2.1	12 4.5 x 3.4 x 2.1	12 4.5 x 3.4 x 2.1	6 4.0 x 1.5 x 1.1	6 3.8 x 1.8 x 1.45
WATERPROOF	Submersible to 20 m	Submersible to 20 m	Submersible to 5 m	Submersible to 5 m	Submersible to 5 m	Submersible to 5 m	Submersible to 5 m	Submersible to 5 m
MOUNT	OD HT Mount	OD HT Mount	OD HT Mount	OD HT Mount	OD HT Mount	OD HT Mount	Bolt-on	OD HT Mount
WINDAGE & ELEVATION ADJUSTMENT	Yes	Yes	Yes	Yes	Yes	Yes	Yes	Yes
ACTIVATION SWITCH	Integrated Push Button and Remote Cable	Integrated Push Button and Remote Cable	Integrated Push Button and Remote Cable	Integrated Push Button and Remote Cable	Integrated Push Button and Remote Cable	Integrated Push Button and Remote Cable	Integrated Push Button and Remote Cable	Integrated Push Button and Remote Cable
REMOTE CABLE PRESSURE PAD	Yes	Yes	Yes	Yes	Yes	Yes	Yes	Yes
SPECIAL FEATURES	-	Pre-Drilled Mounting For Optional Red Dot Sight or MIL-STD 1913 Top Rail	Dual Remote Cable Ports	Dual Remote Cable Ports	Dual Remote Cable Ports	Dual Remote Cable Ports	Low Profile For Mounting in Front of Scopes, Holographic or NV Sights	Low Profile For Mounting in Front of Scopes, Holographic or NV Sights

†Restricted
*Also Available in Desert Sand

Specifications subject to change without notice.
*Range may vary depending on light and/or atmospheric conditions and target reflectivity.
Visible laser range is measured for daytime. Infrared laser range is measured for night.

+1.937.426.2341

OPTICS SPECIFICATIONS

LASERS

BEACONS

LASER TYPE
POWER OUTPUT
WAVELENGTH
BEAM DIVERGENCE
RANGE/VISIBILITY*

	OTAL-A 19241 [†]	OTAL-C 19215	OTAL-C IR 19217	MBS-AA Borelight 3170635
VISIBLE RED OR GREEN	Green - Class 3B	Red - Class 3R	-	Red - Class 3R
IR LASER POINTER	-	-	Class 1	-
IR ILLUMINATOR	-	-	-	-
VISIBLE RED / GREEN LASER	<50 mW	<5 mW	-	<5 mW
IR LASER POINTER	-	-	<0.7 mW	-
IR ILLUMINATOR	-	-	-	-
WHITE LIGHT	-	-	-	-
VISIBLE RED LASER	-	640 nm +/-3%	-	640 nm +/-3%
VISIBLE GREEN LASER	525 nm +/-3%	-	-	-
IR LASER POINTER	-	-	840 nm +/- 3%	-
IR ILLUMINATOR	-	-	840 nm +/- 3%	-
VISIBLE LASER	<0.8 mRad	<0.8 mRad	-	<0.8 mRad
IR LASER POINTER	-	-	<0.8 mRad	-
IR ILLUMINATOR	-	-	-	-
WHITE LIGHT	-	-	-	-
VISIBLE RED LASER	-	25 m	-	25 m
VISIBLE GREEN LASER	100 m	-	-	-
IR LASER POINTER	-	-	1400 m	-
IR ILLUMINATOR	-	-	-	-
WHITE LIGHT	-	-	-	-
TEMPERATURE	+4° C to +65° C	-40° C to +65° C	-40° C to +65° C	-40° C to +65° C
BATTERY	CR123A	AA	AA	AA
BATTERY LIFE (MODE DEPENDENT)	>3 Hours	>3 Hours	>5 Hours	>8 Hours
MATERIAL	Aircraft Aluminum	Aircraft Aluminum	Aircraft Aluminum	Aircraft Aluminum
COLOR	Black	Black	Black	Black
WEIGHT (WITH BATTERY) (OZ.)	6	5.6	5.6	5.4
DIMENSIONS (IN.) (LxWxH)	3.5 x 2.75 x 1.59	2.8 x 1.4 x .75	2.8 x 1.4 x .75	9.25 (L)
WATERPROOF	Submersible to 5 m	Submersible to 5 m	Submersible to 5 m	Submersible to 3 m
MOUNT	OD HT Mount	Attached to A-Frame Front Sight	OD HT Mount	Stainless Steel Bore Rod (2)
WINDAGE & ELEVATION ADJUSTMENT	Yes	Yes	Yes	Yes
ACTIVATION SWITCH	Integrated Push Button(s) and Remote Cable	Integrated Push Button(s) and Remote Cable	Integrated Push Button(s) and Remote Cable	Rotary Switch
REMOTE CABLE PRESSURE PAD	Yes	Yes	Yes	-
SPECIAL FEATURES	Features Modulation Mode with 8 strobing laser pulses	Low Profile For Mounting in Front of Scopes, Holographic or NV Sights	Low Profile For Mounting in Front of Scopes, Holographic or NV Sights	Supplied With Arbers For Most Rifle, Carbine, Submachine Gun and Pistol Calibers

[†]Restricted

PHYSICAL FEATURES
OPTICAL PERFORMANCE
ENVIRONMENTAL

	NOVA A091112-100 [†] A091112-200 [†]	STAR BEACON A091015-001-1 ^{**} A091015-001-2 ^{**}	AIRFIELD BEACON A1500-100KIT ^{x10} 100723-500 [†]	MCID A1700-100 [†] A1700-400 [†]	HMB 300396
BATTERIES	(2) CR 123A	(6) CR 123A	(4) CR 123A	(3) CR 123A	(1) CR 123A
DIMENSIONS	3.5 x 2.3 x 1.0 in.	3.0 x 2.4 x 1.0 in.	3.7 x 3.2 x 1.9 in.	4.9 x 2.1 x 1.1 in.	2.3 x 2.1 x 0.5 in.
WEIGHT	120 grams / 4.2 ounces	124 grams / 4.3 ounces	500 grams / 17.6 ounces	235 grams / 8.3 ounces	-
NUMBER OF EMITTERS	1 NIR 4 MWIR 1 VIS or SWIR	14 MWIR	3 White 3 Red 3 NIR	3 NIR 8 MWIR 3 SWIR	1 VIS 1 NIR 1 SWIR
RUN TIME	NIR - 30 hours Thermal -10-12 hours NIR and Thermal - 8 hours White Light - 4 hours	5 hours	3 to 19 hours	4.5 to 14 hours	-
WAVELENGTH	8-12 µm, 880 nm, 3-5 µm, 1550 nm	3-5 µm	625 nm, 850 nm	880 nm, 3-5 µm, 1550 nm	850 nm, 1550 nm
OPTICAL DIVERGENCE	SWIR - 80° NIR - 132° FWHM Thermal - 100° FWHM (horizontal and vertical) Visible - 115° FWHM	Greater than hemispherical: 360° azimuth x 200° elevation	hemispherical	Greater than hemispherical: 360° azimuth x 200° elevation	-
DETECTABLE RANGE	Nighttime: MWIR 1-3m, NIR 1-3m, SWIR: 2-4m, VIS: 1-3m	Nighttime: MWIR 3-8m	White: 10-12 km NIR: 12-15 km	8 NM	10 km
MAXIMUM LUMINOUS FLUX	(White) - 80 lumens	-	(White) - 80 lumens	(White) - 80 lumens	-
OPERATING TEMPERATURE RANGE	-30°C (-22°F) to 52°C (126°F)	-30°C (-22°F) to 60°C (140°F)	-30°C (-22°F) to 52°C (126°F)	-30°C (-22°F) to 60°C (140°F)	-
STORAGE TEMPERATURE RANGE	-40°C (-40°F) to 65°C (149°F)	-40°C (-40°F) to 65°C (149°F)	-40°C (-40°F) to 65°C (149°F)	-40°C (-40°F) to 80°C (176°F)	-
SUBMERSIBLE / WATERPROOF	3 m for 2 hours	IP65 Rating	IP67 Rating	5 m for 30 min.	-

[†]NIR NIR MWIR

[†]Individual

[†]NIR MWIR SWIR

^{*}MWIR

^{**}SWIR

^{x10}Backpack kit of 10

Specifications subject to change without notice.

*Range may vary depending on light and/or atmospheric conditions and target reflectivity.

Visible laser range is measured for daytime. Infrared laser range is measured for night.

Some items shown in this catalogue are ITAR controlled and may require U.S. Government licensing. It is unlawful to export, or attempt to export or otherwise transfer or sell any hardware or technical data to any foreign person, whether abroad or in the United States, for which a license or written approval of the U.S. Government is required, without first obtaining the required license or written approval from the department of the U.S. Government having jurisdiction. Additional restrictions may apply. Please call for information.



BATTLE LIGHTS & ILLUMINATORS

	Mk3 60455	Mk4 60460*	Mk5 76000	SPiR 60480
LIGHT OUTPUT	IR Illuminator	-	-	IR Illuminator
POWER OUTPUT (HIGH / LOW)	<600 mW / <150 mW	-	-	<600 mW / <300 mW
WAVELENGTH	850 nm	-	-	850 nm
FDA CLASS	Eye-Safe	-	-	Eye-Safe
BEAM DIVERGENCE	8°	-	-	2° to 30°
RANGE (HIGH POWER)	200 m	-	-	1,000 m
LAMP	White Light LED	White Light LED	White Light LED	-
POWER OUTPUT (HIGH / LOW)	500 Lumens	500 Lumens	800 Lumens	-
BEAM DIVERGENCE	10°	10°	10°	-
RANGE (HIGH POWER) <small>RANGE MAY VARY DEPENDING ON LIGHT CONDITIONS.</small>	250 m	300 m	400 m	-
REFLECTION LENS	Total Internal Reflection Lens	Total Internal Reflection Lens	High Output Deep Dish	-
BATTERY	CR123A (2)	CR123A (2)	CR123A (2)	CR123A (2)
BATTERY LIFE	>1.25 Hours	>1.25 Hours	>1 Hour	>2 Hours
MATERIAL	Aircraft Aluminum	Aircraft Aluminum	Aircraft Aluminum	High-Impact Polymer
COLOR	Black	Black	Black	Black
WEIGHT (WITH BATTERY & MOUNT) (OZ.)	8	4.9	6.1	6.5
DIMENSIONS (IN.) (LxWxH)	3.97 x 2.18 x 1.73	6.04 (L)	6.44 (L)	6.75 x 1.55 x 1.95
TEMPERATURE RANGE	-40° C to +65° C	-40° C to +65° C	-40° C to +65° C	-40° C to +65° C
WATERPROOF	Submersible to 5 m	Submersible to 5 m	Submersible to 5 m	Submersible to 5 m
MOUNT	MIL-STD-1913/ Picatinny rail	MIL-STD-1913/ Picatinny rail	MIL-STD-1913/ Picatinny rail	MIL-STD-1913/ Picatinny rail
ACTIVATION SWITCH	Integrated Push Button	Integrated Push Button	Integrated Push Button	Integrated Push Button
REMOTE CABLE PRESSURE PAD	Included	Included	Optional	Included
LOW BATTERY INDICATOR	Yes	-	-	-
SPECIAL FEATURES	Instantly Switch Between White Light Illumination (With or Without Strobe) or IR Illuminator	Comes with 1913 Mount, Dual-Purpose Tailcap and Remote Pressure Pad / Optional Y-Cable Connects Mk4 to DBAL-A3 Laser	Handheld or Weapon-Mounted with Optional Accessories	Weapon Mount Included

IR OUTPUT

VISIBLE OUTPUT

POWER OUTPUT
LASER TYPE

	TOR Fusion 300389/300390	TOR Fusion IR 300443	TOR Torch 300391	TOR Mini 300387/300388	TOR Mini IR 300442
VISIBLE RED/GREEN LASER	Green - Class 3R Red - Class 3R	-	-	Green - Class 3R / Red - Class 3R	-
LASER POINTER	-	Class 3R	-	-	Class 3R
VISIBLE RED/GREEN LASER	<5 mW	-	-	<5 mW	-
IR LASER POINTER	-	<5 mW	-	-	<5 mW
WHITE LIGHT	500 lumen	500 lumen	500 lumen	-	-
DIMENSIONS	2.7 x 1.4 x 1.6 in.	2.7 x 1.4 x 1.6 in.	2.7 x 1.4 x 1.6 in.	2.1 x 1.3 x 1.2 in.	2.1 x 1.3 x 1.2 in.
BATTERY	CR123A	CR123A	CR123A	1/3N	1/3N

CUSTOMER SERVICE

YOUR STEINER EOPTICS ARE BACKED BY A COMMITMENT TO OPTIMUM PERFORMANCE AND YOUR COMPLETE SATISFACTION. ANY QUESTIONS OR CONCERNS WILL BE QUICKLY ADDRESSED BY ONE OF OUR EXPERT SALES REPRESENTATIVES. PLEASE CONTACT US DIRECTLY IF YOU HAVE A QUESTION OR SERVICE NEED:

STEINER EOPTICS

3475 Newmark Drive, Miamisburg, OH 45342
TEL: +1.937.426.2341 | FAX: +1.937.426.4820

Sales@steiner-eoptics.com



All Steiner eOptics products are supported by a full
2 YEAR WARRANTY

*Available in Desert Sand

Specifications subject to change without notice.

*Range may vary depending on light and/or atmospheric conditions and target reflectivity. Visible laser range is measured for daytime. Infrared laser range is measured for night.



STEINER-DEFENSE.COM

STEINER EOPTICS
3475 Newmark Drive
Miamisburg, OH 45342
TEL: +1.937.426.2341
FAX: +1.937.426.4820
Sales@steiner-eoptics.com

BDT

BERETTA DEFENSE TECHNOLOGIES



 BERETTA  Benelli  sako  STEINER

Firearms | Optics | Ammunition
Tactical Equipment | Accessories | Uniforms

A strategic alliance of defense companies focused
on providing integrated systems for our Warfighter.

BDT. Your First Line of Defense.

BerettaDefenseTechnologies.com

